

HOW-TO GUIDE

Network Statistics – Power BI Report

November 2025



General Features / Power BI Tips	3
Home Page	4
Network Statistics: Track km	6
Network Statistics: Total Train km	7
Network Statistics: All Other Train km or Passenger Movement Pages	8



REFRESH

Refreshing the web browser will navigate back to the home page.



TOOLTIPS

Hover over buttons, charts and other visuals as there may be additional information that appears as a tooltip.



INFORMATION

Hover over information icons to see a definition or an explanation of a report feature.



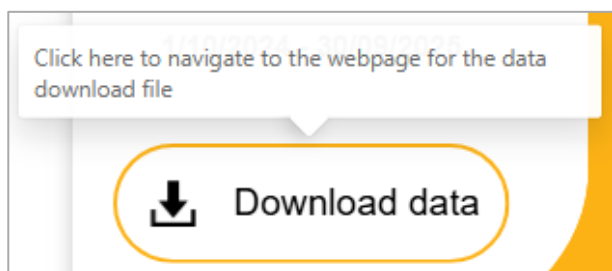
HOME

Most pages of the report (except the home page) have a home button in the top right corner to navigate to the home page.



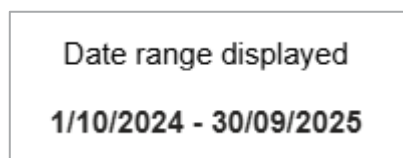
BACK

Most pages of the report (except the home page) have a back button in the top right corner to navigate to the last page viewed.



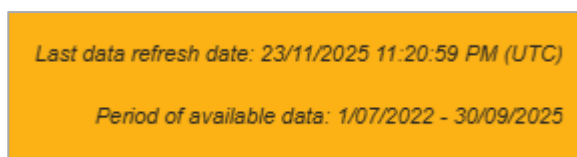
DOWNLOAD DATA

Every page of the report has a download data button in the bottom left corner to navigate to the ONRSR website page where the data download file is located.



DATE RANGE DISPLAYED

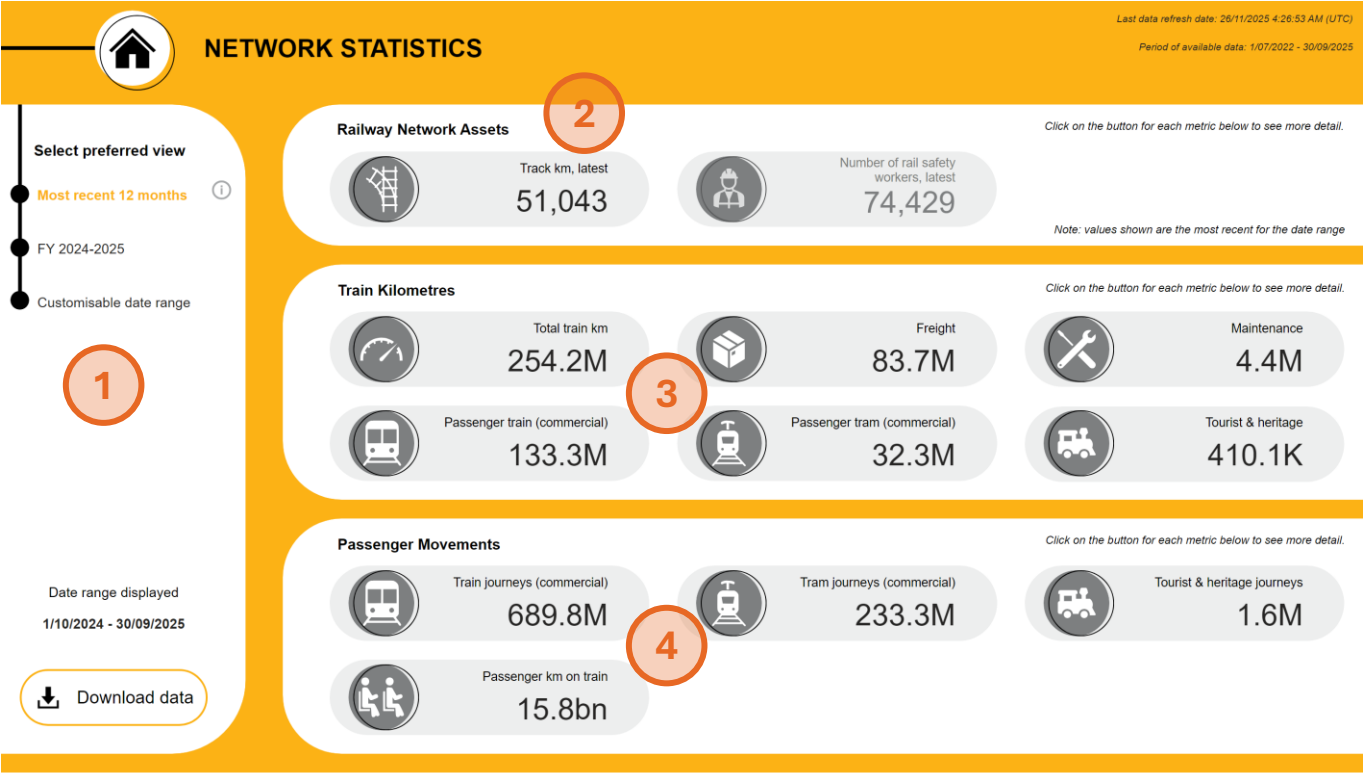
Every page shows the date range displayed in the charts determined by any filters applied.



METADATA

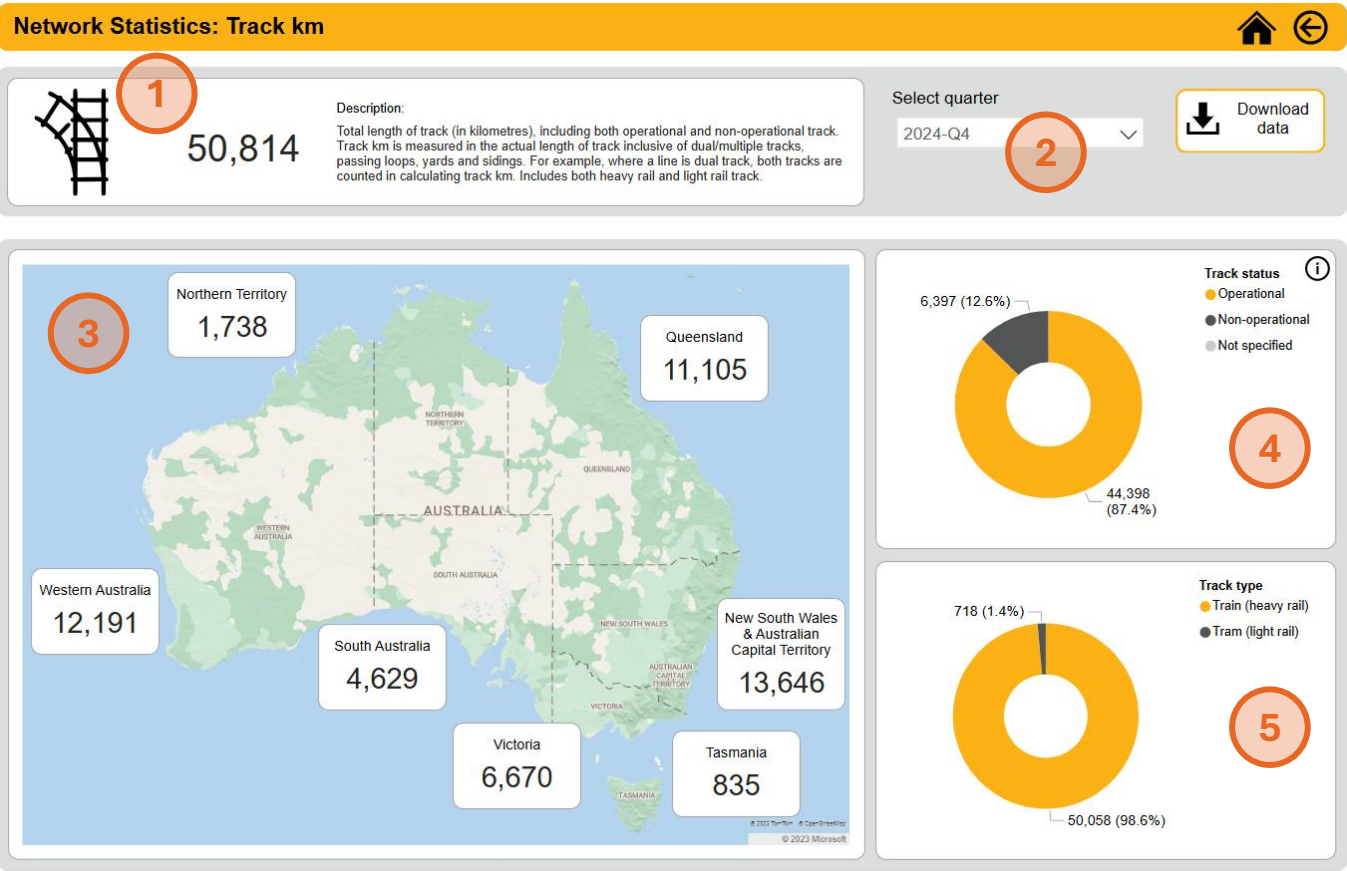
The home pages provide information about the last time the data was refreshed with updates from the data base and the full period of data that is available in the report.

View(s): Most recent 12 months; FY 2024-2025



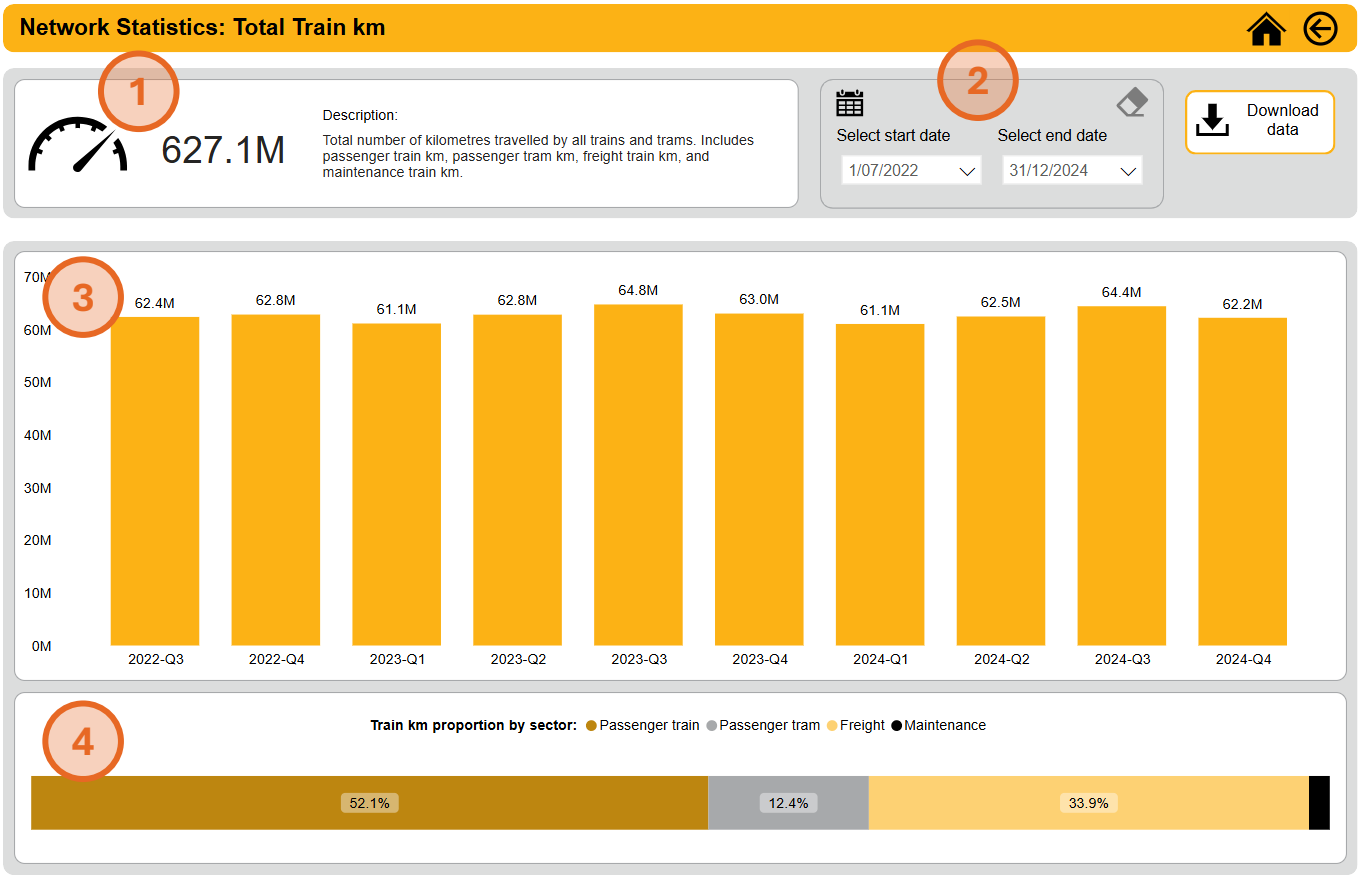
- 1 There are three view options showing different date ranges (most recent 12 months, FY 2024-2025, and customizable). These can be selected from the Options panel on the left-hand side of the page. This view shows the most recent 12 months of the available data. Use these button to toggle between this view and either the last financial year or a customisable date range (more detail on p5)
- 2 Click this button to access more detail about track km (see p6 for details)
- 3 Click any of these buttons to access more detail about the various types of train km (see p7 for details)
- 4 Click any of these buttons to access more detail about the various types of passenger movement, e.g. passenger km or journeys (see p7 for details)

Network Statistics: Track km



- 1
- Total track km at the end of the quarter selected.
- 2
- Date filter – select a quarter to view data for the end of that quarter.
- 3
- Shows the total track km for each state / territory at the end of the quarter selected.
- 4
- Shows the proportion of operational and non-operational track km at the end of the quarter selected.
- 5
- Shows the proportion of heavy rail and light rail track km at the end of the quarter selected.

Network Statistics: Total Train km



- 1

Total train km for the filters / options selected
- 2

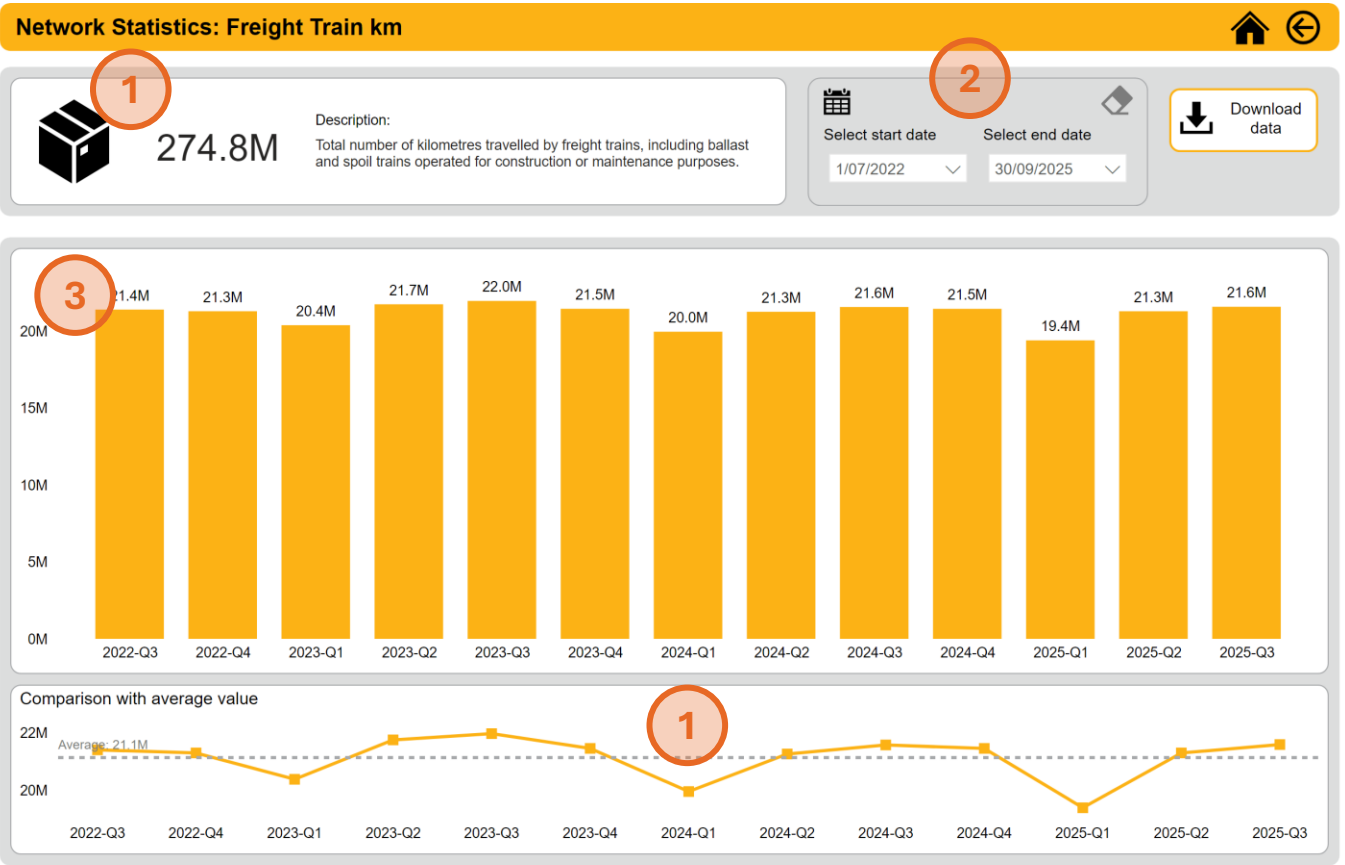
Date range filter

> Select start and end dates using dropdown date filters

> Clear the filter to show full reporting period by clicking on the eraser icon
- 3

Shows the total train km by quarter for the filters / options selected.
- 4

Shows the proportion of total train km by sector.



- 1
- Total train km (or movement value) for the filters / options selected
- 2
- Date range filter

> Select start and end dates using dropdown date filters

> Clear the filter to show full reporting period by clicking on the eraser icon
- 3
- Shows the total train km (or movement value) by quarter for the filters / options selected.
- 4
- Shows a comparison between the quarterly train km (or movement value) and the average for the full reporting period.