

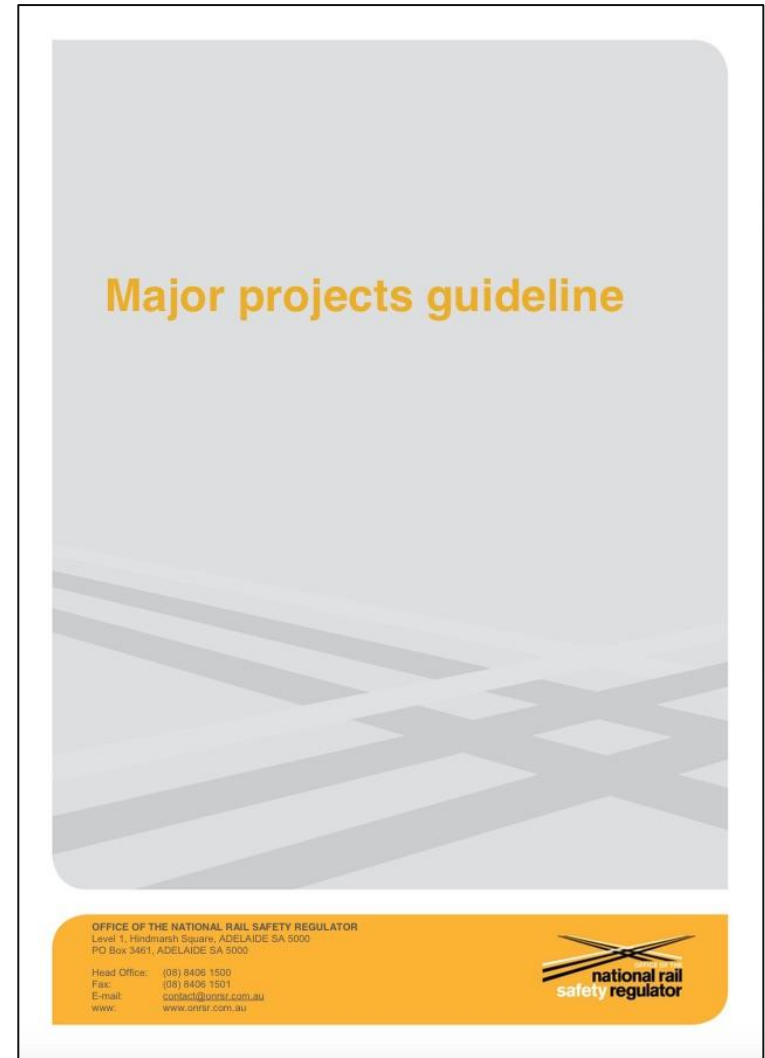
Delivering Safe Projects

IRSE Technical Conference

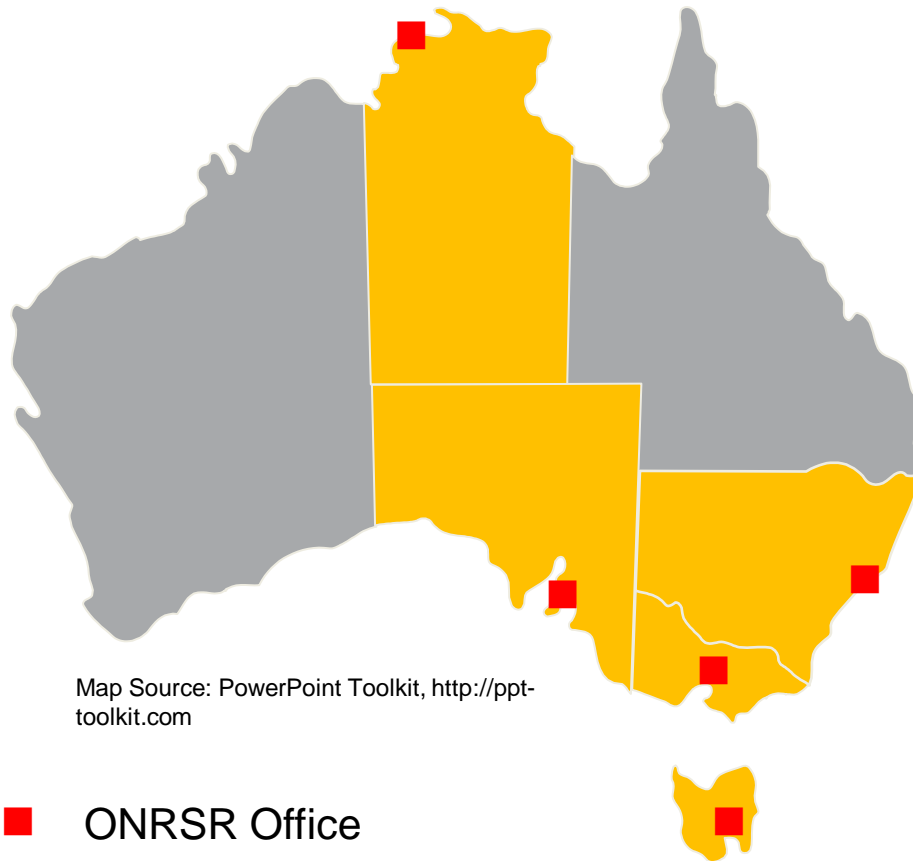
Andy Webb MIRSE | Head of Strategic Projects
20 March 2015

Contents

- Introduction to the Office of the National Rail Safety Regulator
 - coverage
 - organisation
 - function
- Introduction to ONRSR's *Major Project Guideline*
 - published at www.onrsr.com.au



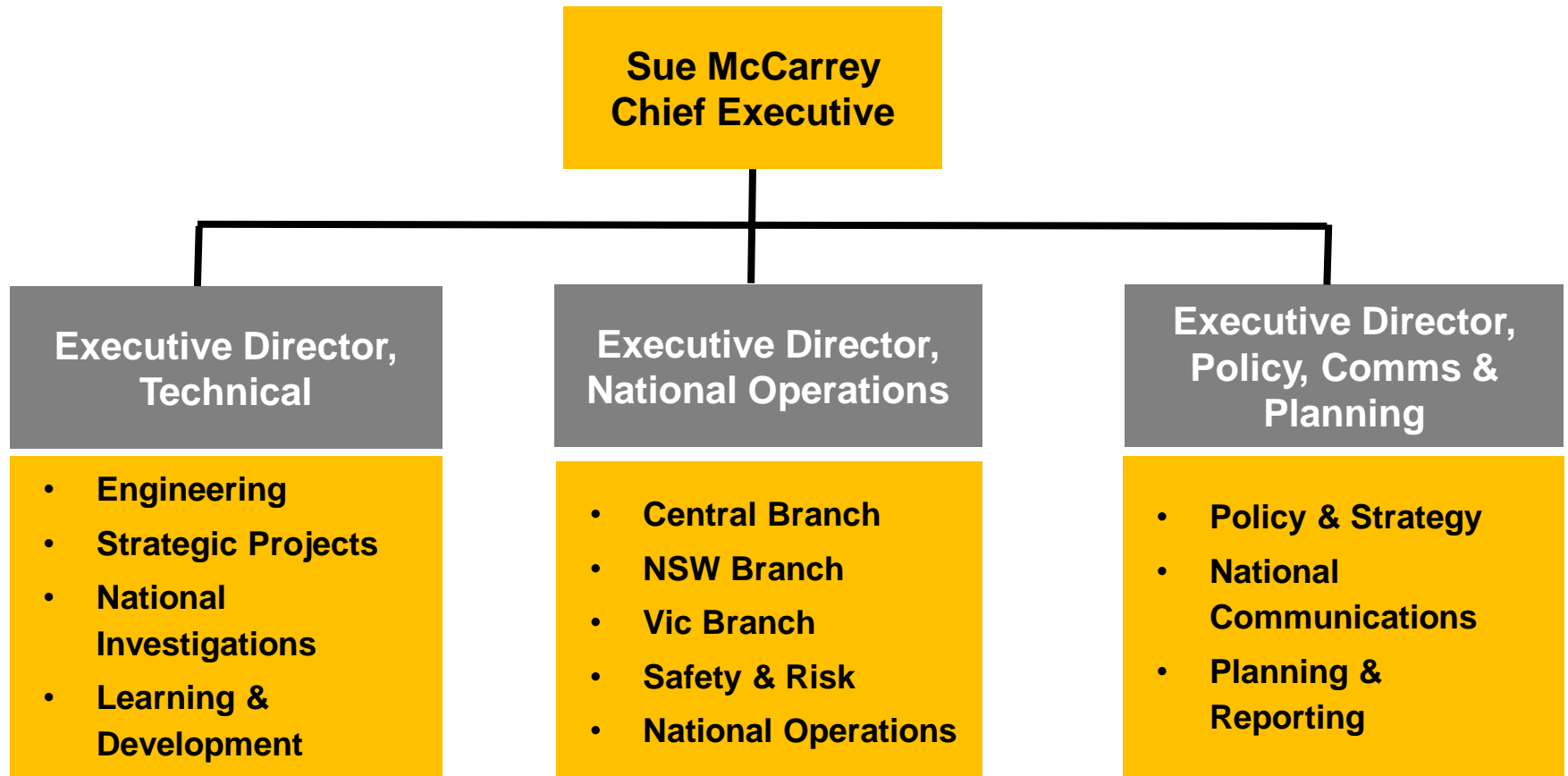
ONRSR: key facts



- ONRSR Office
- ONRSR regulatory oversight of railway operations

- > commenced on **20 Jan 2013**
- > an **independent authority**
- > funded by industry and government
- > WA anticipated June 2015
- > Head Office: Adelaide
- > Central Branch: SA, TAS, NT, ACT
- > NSW Branch
- > Victorian Branch

ONRSR: organisation overview



ONRSR: key functions

- **administer, audit and review** the accreditation regime under the *Rail Safety National Law (RSNL)* and Regulations
- **work with** rail transport operators, rail safety workers and others involved in railway operations **to improve rail safety** nationally
- **conduct** research, **collect and publish** information relating to rail safety



ONRSR: key functions



- **provide**, or facilitate the provision of, advice, **education and training** in relation to rail safety
- **monitor, investigate** and **enforce** compliance with the RSNL
- **engage in, promote** and **coordinate** the sharing of information to achieve the objects of the RSNL

Major Project Guideline



Background: context

- Major projects are complex, typically:
 - multi-disciplinary activity
 - use of novel technology
 - significant change
- No standard delivery structure
 - many models can be used
- Growing need to document ONRSR's minimum expectations

Background: delivering safe projects

Delivery risks

Major projects develop with insufficient safety management leading to delay in gaining safety accreditation

Multiple entities developing major projects results in unclear safety responsibilities leading to delay in gaining safety accreditation

Major projects do not consider ops & mtce safety risks resulting in inappropriate solutions leading to delay in gaining safety accreditation

Industry controls

Document safety roles and responsibilities

Early engagement: ONRSR / government / industry

Document accreditation strategy

Early identification of railway transport operator that manages O&M risks

Plan for safety assurance; manage safety risks from the start

Background: challenges

- ensuring the concept design minimises macro risk
- identification of the accredited party(s)
- demonstration of effective management & control:
 - to ensure safety risk is managed
- assuring safe outcomes:
 - confidence that safety risk managed appropriately for the complexity of the project
 - the project has the competence and capacity to manage safety risk.

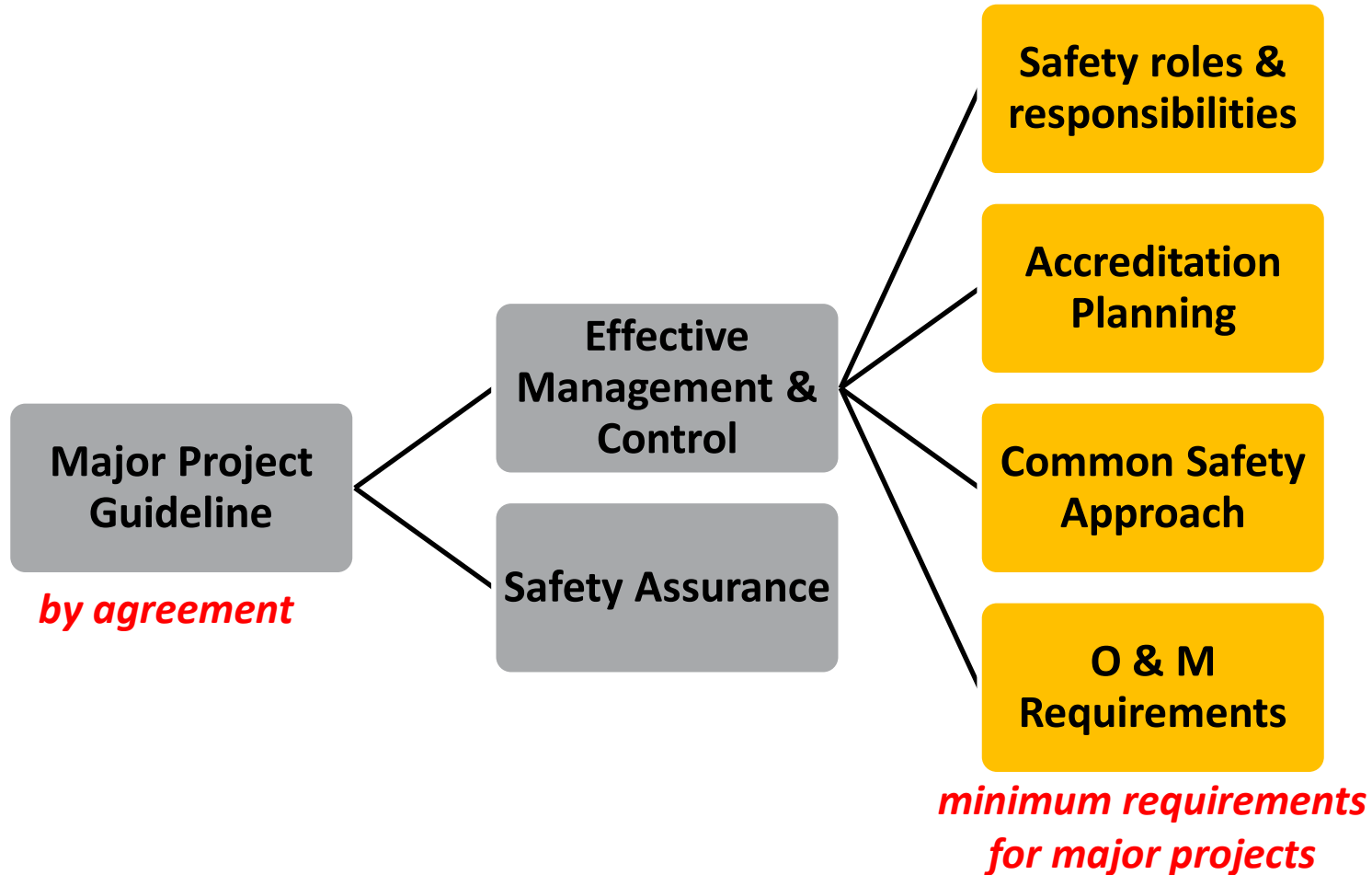
Background: key risks

- Lack of effective safety management due to:
 - poor safety leadership
 - multiple entities having control throughout the project lifecycle
 - commercial pressures taking precedence.
- Assuring safe outcomes
 - safety requirements inadequate
 - project scope inadequately addresses safety improvement
 - developed design inadequate for safe outcomes
 - constructed assets inadequate for safe outcomes
 - lack of industry understanding on ONRSR expectations.

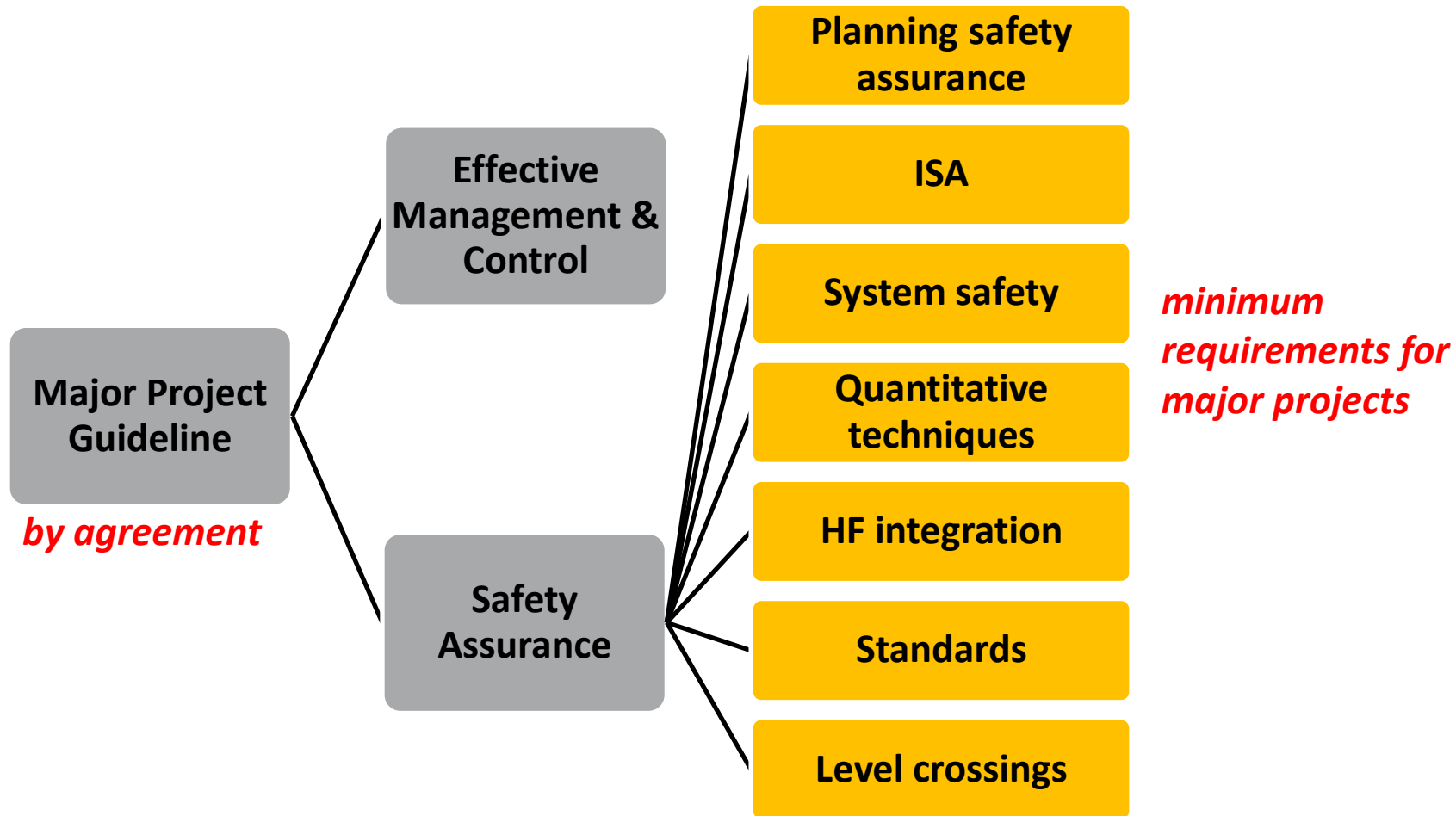
Major Project Guideline



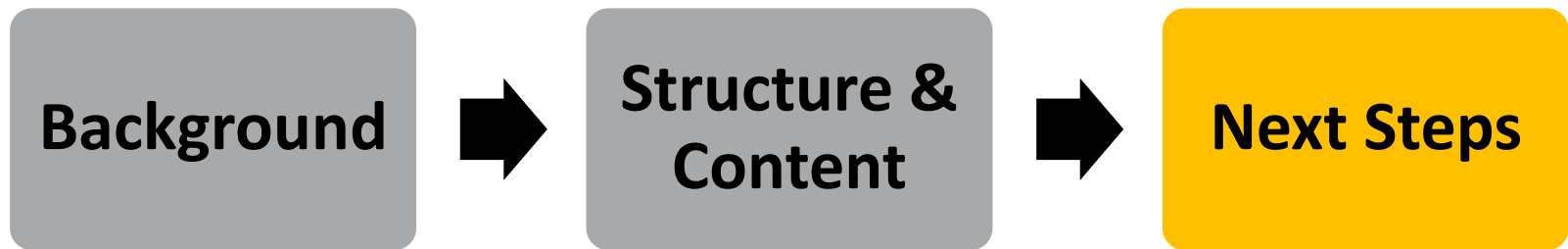
Guideline: structure



Guideline: structure



Major Project Guideline



Next Steps

Published (*Dec 2014*)



```
graph TD; A[Published (Dec 2014)] --> B[Communication with industry (2015)]; B --> C[Application with industry (2015)];
```

**Communication with
industry (*2015*)**

**Application with
industry (*2015*)**

An illustration of a train platform. A yellow train with a white stripe and a row of grey windows is moving along the platform. The platform has a grey tiled floor with a yellow safety line. The ceiling is grey with a grid pattern.

Questions?