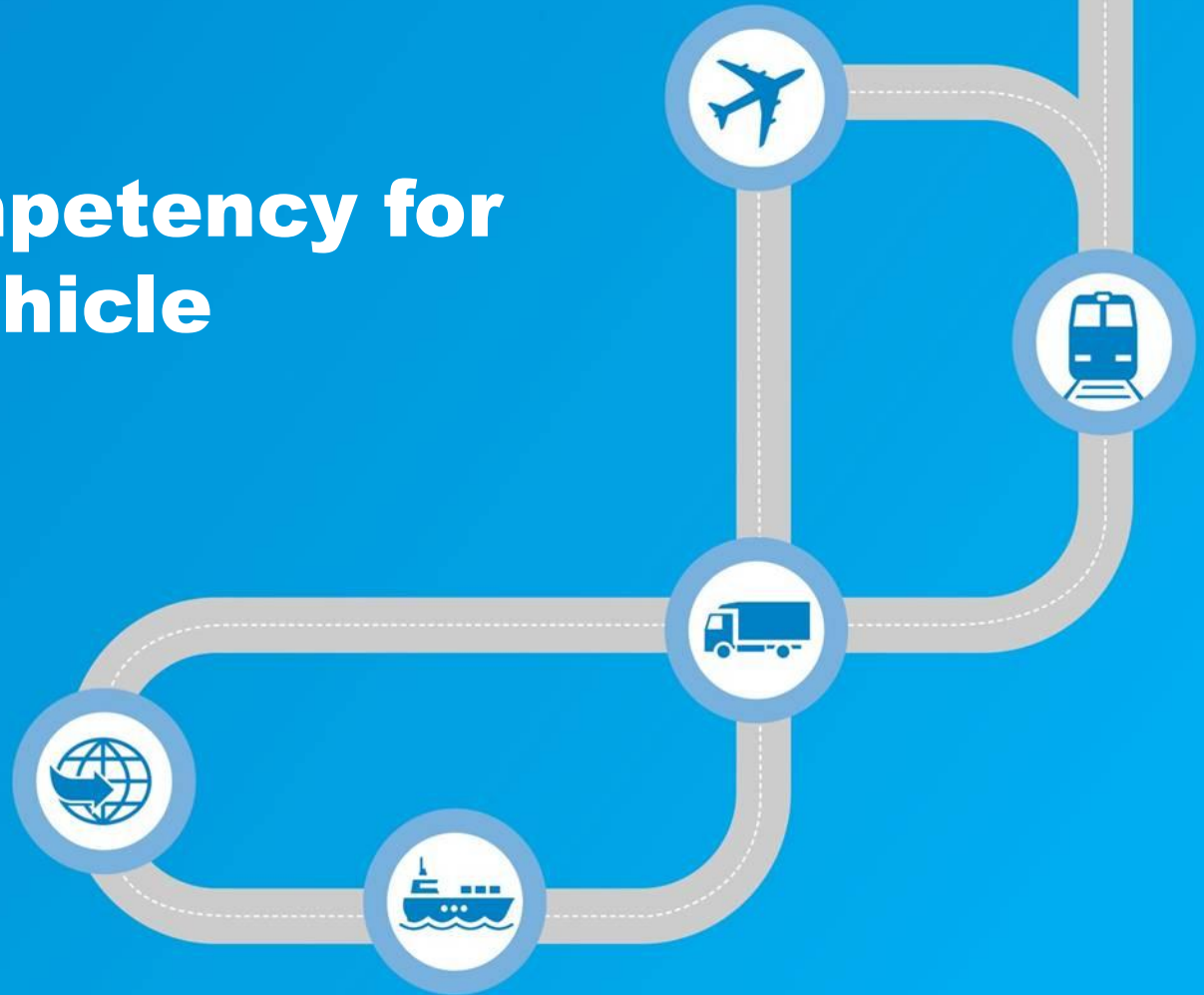


# Units of competency for Road-Rail Vehicle operations



Rae Fossard

Senior Training Package Specialist - Rail

Transport and Logistics Industry Skills Council



The Transport & Logistics Industry Skills Council is funded by the Commonwealth through the Department of Industry, Innovation, Climate Change, Science, Research and Tertiary Education



# Presentation content

1. Skills Councils and the Australian Training Framework
2. Units of Competency related to road-rail vehicle (RRV) operations
3. Developing new qualifications and/or units of competency



**1**

**Skills Councils  
& the  
Australian  
Training  
Framework**

# Industry Skills Councils

## 11 Skills Councils (Industry Sectors)

- **Transport & Logistics**
- **Skills DMC**
- **E-Oz Training Standards**
- **Manufacturing Skills Australia**
- Government Skills Australia
- Agri-Food
- Service Skills
- Forestworks
- Construction and Property Services
- Innovation & Business
- Community Services & Health



# Training package specialist - Rail

## Key Activities

- ▶ **Work with industry, unions, regulators, etc to:**
  - ▶ Create and review units of competency
  - ▶ Develop qualifications aligned to job roles
  - ▶ Develop skill sets for particular activities
  - ▶ Provide advice to industry
  - ▶ Provide advice to Registered Training Organisations (RTOs)

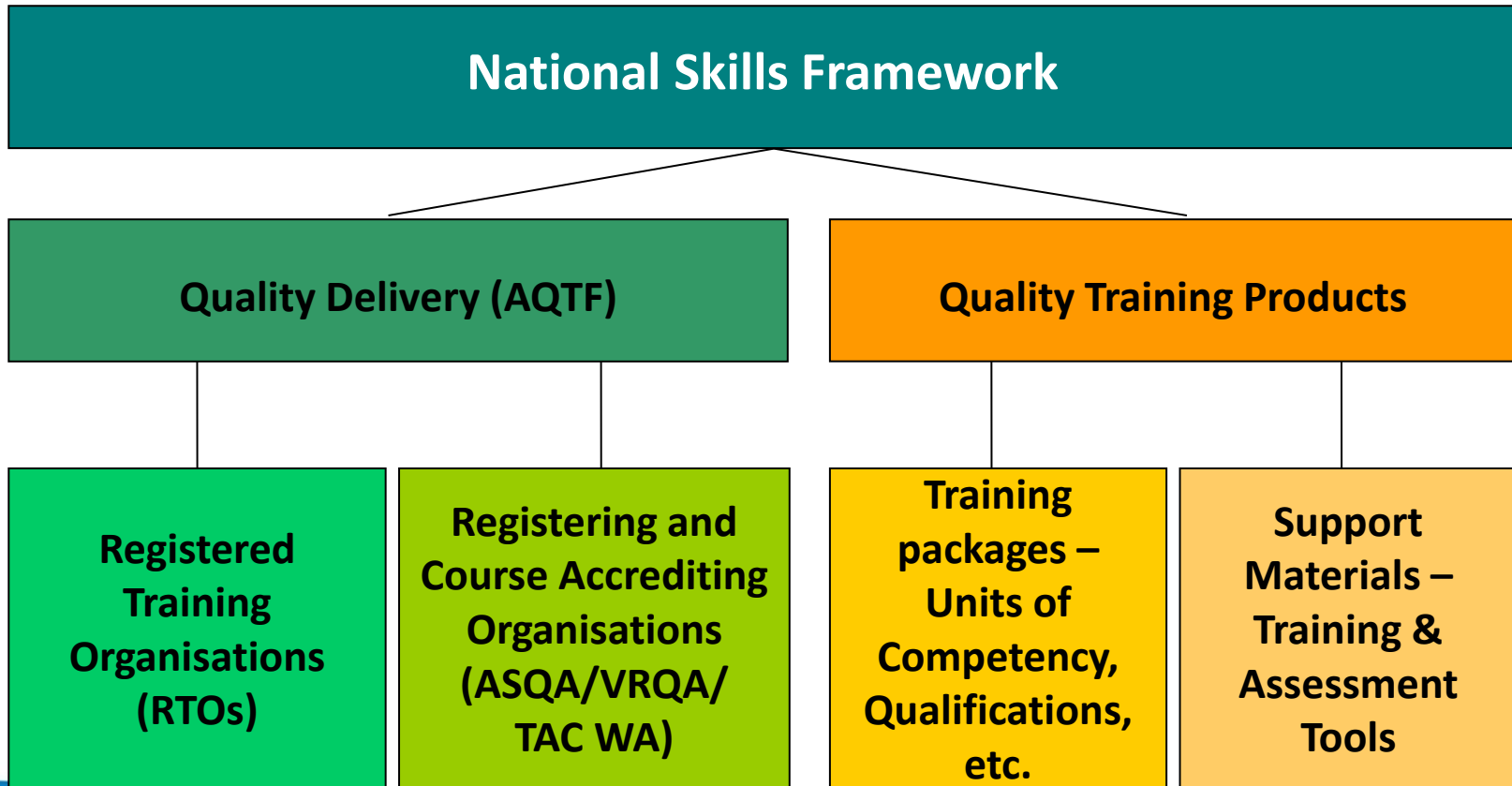
# The Australian Training Framework

The Australian Training Framework is made up of a number of elements:

- ▶ National Skills Framework
- ▶ Australian Qualifications Framework (AQF)
- ▶ Australian Quality Training Framework (AQTF)
  - a national set of standards which assures nationally consistent training and assessment



# The National Skills Framework







**2**

**Units of  
Competency  
related to  
RRV  
operations**

# Units of competency related to RRV operations

There are two units that cover RRV operations

- ▶ TLIC3045A Operate road/rail vehicle

This unit covers; preparing for work, on-railing and off-railing the RRV and meeting post-operational requirements

- ▶ TLIC2059A Propel and operate light on-track equipment

This unit is for equipment under 10 tonnes which may be lifted on/off track or, in combination with TLIC23045A, on and off-railed

It covers, pre operational checks, on railing , operating and off-railing/stabling the equipment and post-operational procedures



# TLIC3045A elements and performance criteria

## Elements and Performance Criteria

### ELEMENT

1 Perform pre-operational equipment checks

2 On track and operate road/rail vehicle

### PERFORMANCE CRITERIA

- 1.1 Basic pre-operational equipment checks are conducted as per manufacturers specifications or local maintenance schedules
- 1.2 Log books are checked and completed accurately as required
- 1.3 Deficiencies with equipment are identified and rectified in accordance with workplace procedures
- 1.4 Relevant persons are notified of problems and/or documentation completed
- 2.1 On-tracking location is identified and appropriate on-track permission/authority is obtained
- 2.2 Vehicle is placed on track and set up to operate in accordance with manufacturers specifications and organisational requirements
- 2.3 Vehicle is operated in a safe and efficient manner in accordance with the relevant codes of practice, safeworking systems and manufacturers and local working instructions
- 2.4 Vehicle is operated with due regard for prevailing operating conditions to ensure safe working and minimise/eliminate potential hazards or accidents
- 2.5 Warning systems are monitored and responded to appropriately during operation to maintain correct functionality of vehicle

# TLIC3045A elements and performance criteria (continued)

- 3 Off track road/rail vehicle
  - 3.1 Off-track location is identified and, if required, appropriate permissions to off track vehicle is obtained
  - 3.2 Front/rear rail wheels are retracted in accordance with manufacturer specifications
  - 3.3 Vehicle is driven not less than 3 metres from running rails, and safety locks to rail wheels are applied
  - 3.4 That vehicle is clear of all running lines is confirmed with train control/network
- 4 Perform post-operational equipment procedures
  - 4.1 Vehicle is left stored in appropriate manner and location to ensure security and protection of equipment
  - 4.2 Post-operational vehicle checks are conducted as per manufacturers specifications or local maintenance schedules to identify defects and maintenance requirements
  - 4.3 Deficiencies with equipment are identified and rectified in an appropriate manner to maintain equipment in correct functionality of equipment
  - 4.4 Relevant persons are notified of problems and/or documentation is completed in accordance with instructions and the relevant codes of practice
- 5 Complete
  - 5.1 Log books are checked and completed accurately



# TLIC3045A required knowledge

## REQUIRED KNOWLEDGE AND SKILLS

This describes the essential knowledge and skills and their level required for this unit.

### Required knowledge:

- Relevant safety, OH&S and environmental procedures and regulations
- Workplace procedures for the operation of road/rail vehicles
- Problems that may occur during the on tracking and off tracking of road/rail vehicles, and action that can be taken to report or resolve the problems
- Problems that may occur during the operation of road/rail vehicles, and action that can be taken to report or resolve the problems
- Hazards that may exist when operating road/rail vehicles, and ways of controlling the risks involved
- Types of road/rail vehicles and their applications
- Road rules for road/rail vehicle management and use
- Technical specifications and manuals
- Track structure and geometry
- Defects that can occur on road/rail vehicles and related action that should be taken
- Emergency procedures
- Local authority procedures

# TLIC3045A required skills

## Required skills:

- Implement contingency plans for unexpected events when operating road/rail vehicles
- Apply precautions and required action to minimise, control or eliminate hazards that may exist during work activities
- Monitor work activities in terms of planned schedule
- Modify activities depending on differing operational contingencies, risk situations and environments
- Apply fatigue management strategies
- Work systematically with required attention to detail without injury to self or others, or damage to goods or equipment
- Operate and adapt to differences in equipment in accordance with standard operating procedures
- Select and use required personal protective equipment
- Identify, select and use tools and equipment
- Access and interpret train movement information
- Operate road/rail vehicles (for which certificated, licensed or approved)



# TLIC3045A range statement

## Range Statement

### RANGE STATEMENT

The range statement relates to the unit of competency as a whole. It allows for different work environments and situations that may affect performance.

- Operations may be conducted:
- by day or night
  - in all weather conditions
- Road/rail vehicles may include but are not limited to:
- weed sprayer
  - light-medium rigid vehicles
  - excavators
  - pettibone
  - tractors
  - four-wheel drives

- Hazards may include:
- ?
  - ?
  - ?
  - ?
  - ?

# TLIC3045A assessment requirements

## Evidence Guide

### EVIDENCE GUIDE

The evidence guide provides advice on assessment and must be read in conjunction with the performance criteria, required knowledge and skills, the range statement and the assessment guidelines for this Training Package.

#### **Critical aspects for assessment and evidence required to demonstrate competency in this unit**

- The evidence required to demonstrate competency in this unit must be relevant to and satisfy all of the requirements of the elements and performance criteria of this unit and include demonstration of applying:
  - the underpinning knowledge and skills
  - relevant legislation and workplace procedures
  - other relevant aspects of the range statement
- Assessment must include exercises which demonstrate competent performance of the following in a range of situations:
  - performing pre- and post-operational checks
  - on railing and off railing vehicles correctly
  - operating road/rail vehicles on-rail
  - communicating effectively with relevant personnel whilst operating road/rail vehicle





# TLIC3045A assessment requirements

## EVIDENCE GUIDE

### Context of and specific resources for assessment

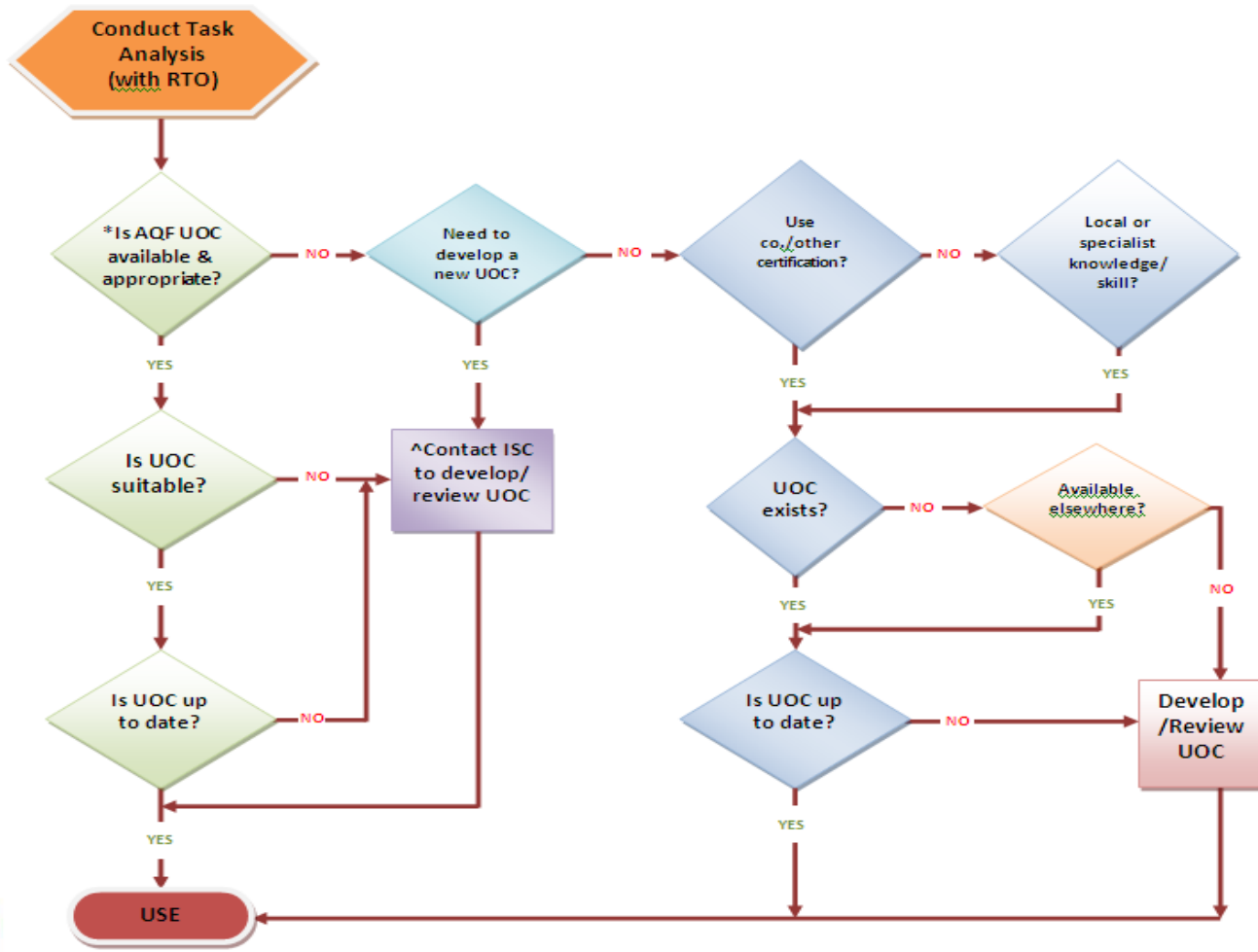
- Performance is demonstrated consistently over a period of time and in a suitable range of contexts
- Resources for assessment include:
  - a range of relevant exercises, case studies and/or other simulated practical and knowledge assessment, and/or
  - access to an appropriate range of relevant operational situations in the workplace
- In both real and simulated environments, access is required to:
  - relevant and appropriate materials and equipment, and
  - applicable documentation including workplace procedures, regulations, codes of practice and operation manuals



**3**

**Developing  
new  
qualifications  
and/or units of  
competency**

# Matching units of competency to job roles



# Unit of competency development process

Once the need for a Unit of Competency is identified:

TLISC will confirm it is applicable nationally

It will be placed on the Continuous Improvement Plan

It is passed to the appropriate Steering Committee

A Technical Advisory Group (TAG) may be formed to develop the unit/s of competency

# Unit of competency development process (continued)

Unit/s of Competency are developed and passed back to the Steering Committee for “sign off”

Unit/s of Competency are placed in the Draft Training Package

Draft Training Package is edited, quality assured and prepared for endorsement

Following endorsement the new Training Package is released on training.gov.au

# Alternatives to nationally recognised units of competency

If nationally accredited Unit/s of Competency are not appropriate:

Local or organisational requirements/standards are identified

Learning and assessment materials are developed

Sustainability of materials is confirmed through internal audit processes

# Contact details

Rae Fossard

Senior Training Package Specialist (Rail)

Transport & Logistics Industry Skills Council

Level 4, 411 Collins Street

Melbourne VIC 3000

Direct: 03 9604 7206

General: 03 9604 7200

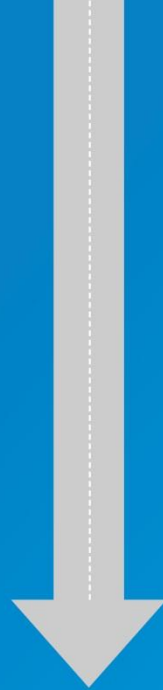
Fax: 03 9606 0066

Mobile: 0412 128646

Email: [rae.fossard@tlisc.org.au](mailto:rae.fossard@tlisc.org.au)

Website: [www.tlisc.org.au](http://www.tlisc.org.au)





**[www.tlisc.org.au](http://www.tlisc.org.au)**

**P** 03 9604 7200

**F** 03 9629 8903

**E** [enquiries@tlisc.org.au](mailto:enquiries@tlisc.org.au)