

SYDNEY: OFFICE ACCESSIBILITY



DROP OFF & PARKING



- Designated accessible parking at 309 and 321 Kent Street car parks but managed by Wilson parking.
- Wilson Carpark offers general paid parking, access via 86 Sussex Street (rear of building).
- Wynyard Station walking distance to office (use Exit 4 toward Barangaroo and head to Kent Street Tunnel).

ACCESSING THE BUILDING



- Main entrance has steps but has accessible ramp located to left of automatic entry doors 7:00am - 7:00pm.
- Multiple lifts labelled A-E. Use digital lift panel to select Level 4; system will indicate which lift to use (e.g. Lift C). Proceed to the designated lift, which will automatically take you to Level 4.

AROUND THE OFFICE



- Use SINE arrival system in Level 4 foyer.
- No steps around office.
- Lighting is bright and sufficient.

Level 4, 309 Kent Street, Sydney

1800 572 077

SYDNEY: OFFICE ACCESSIBILITY

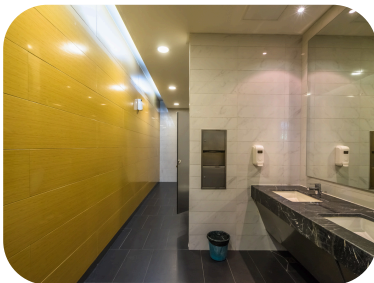


AROUND THE OFFICE (CONT.)



- Temperature monitored - controlled by building manager, settings can be adjusted centrally upon request.
- Quiet rooms and adequate office space for physical distancing.
- Wellness/First Aid room available.

BATHROOMS



- Two bathrooms in office, close to meeting rooms
- Closest accessible bathroom on Level 5 between 7am - 6pm (Monday - Friday).

FURTHER INFORMATION



- If a hearing loop, an interpreter, captioning or other options would make your meeting at ONRSR more accessible, please email peopleandcapability@onrsr.com.au

Level 4, 309 Kent Street, Sydney
1800 572 077